

SINGLE SOURCE
CUSTOM ENGINEERING
APPLICATION EXPERTISE

VAC-U-MAX

DELIVERING MORE

GLOBAL SERVICE & SUPPORT
100% GUARANTEED
SINCE 1954



Innovations in Precast

Productivity and Safety Advancements with Industrial Vacuum Systems

“It’s Not Just About Silica...”



- ✓ ***Productivity***
- ✓ ***Material Handling***
- ✓ ***Ergonomics***
- ✓ ***Flexibility***
- ✓ ***Improved Working Conditions***
- ✓ ***Profitability***
- ✓ ***Safety***
- ✓ ***Efficiency***
- ✓ ***Replacing manual with mechanized***
- ✓ ***Dust & Quality Control***
- ✓ ***Reduced Maintenance***



Types of Industrial Vacuum Cleaning Systems

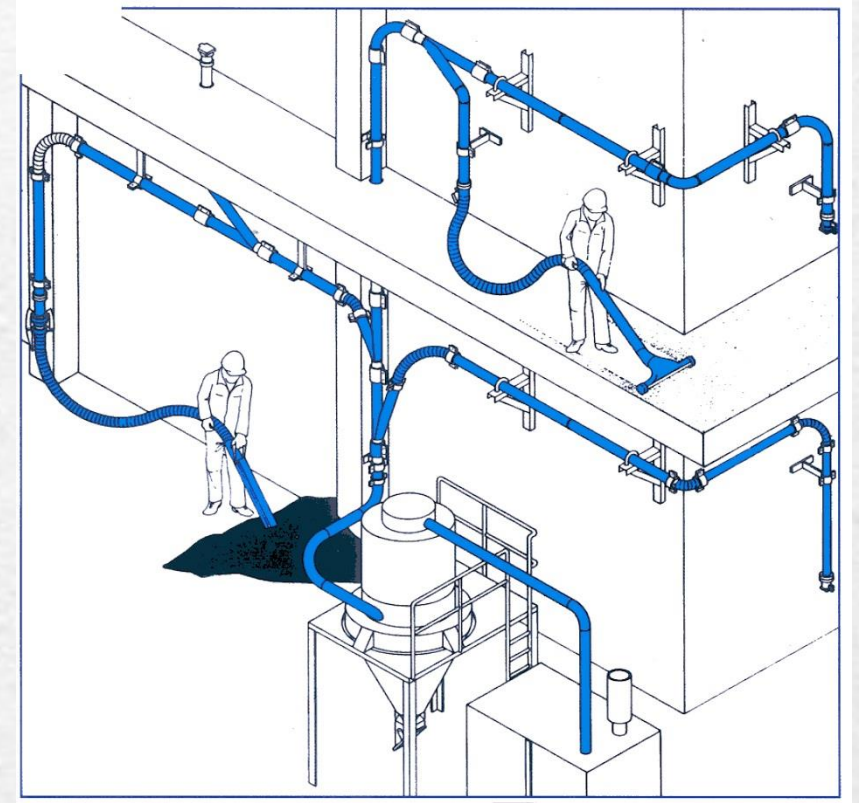
Portable: Compressed air powered and 115V/1ph

Portable: Continuous-duty

Transportable

Vacuum Loaders

Central Vacs



SINCE 1954

VAC-U-MAX

DELIVERING MORE

vac-u-max.com

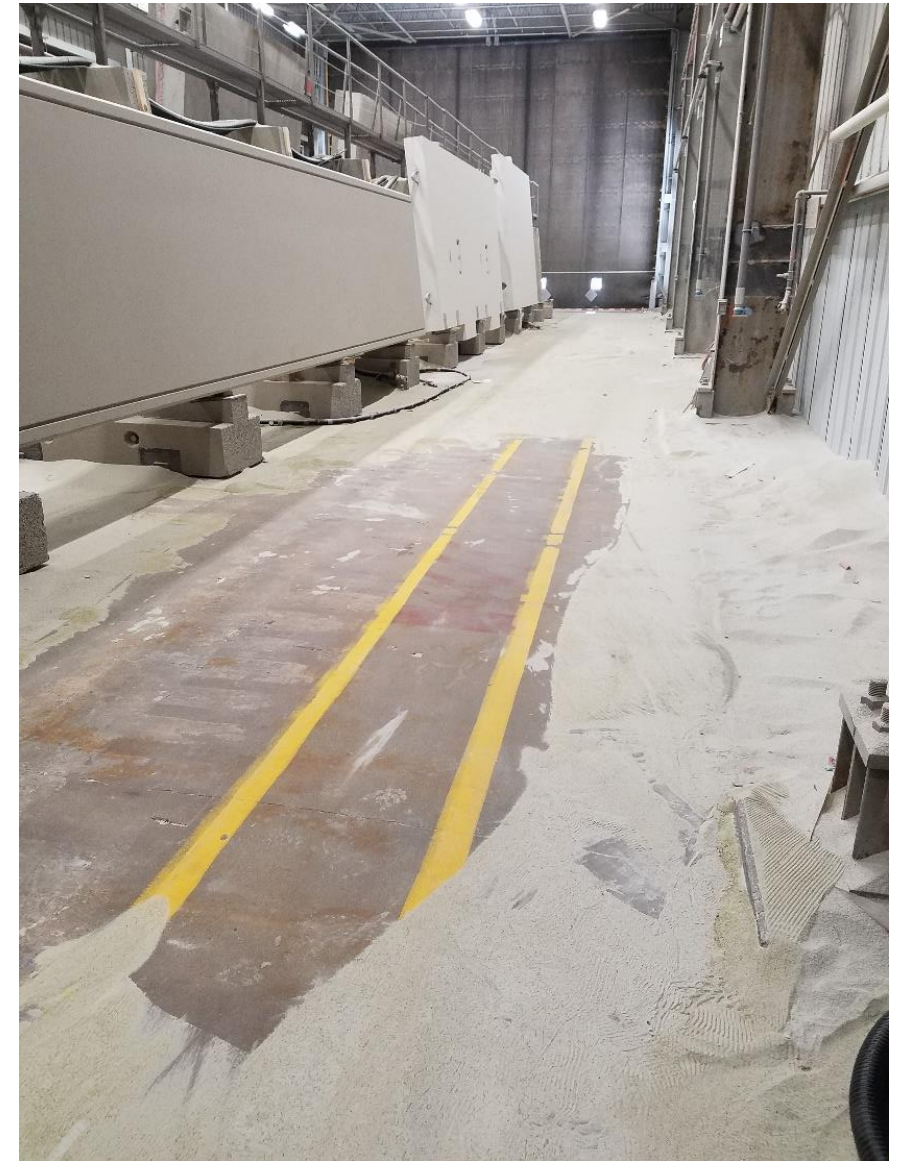
Productivity: Blast Rooms & Buildings



Inside Blast Building, pathways cleared in one pass with wheeled floor tool



Material Handling:
***Central vacs take debris away to single
collection point. Out-of-sight, out-of-mind!***



Productivity & Ergonomics:
Daily Spillage: Batch Plants, Conveyors, Feeders



Save hours of drudgery and avoid back injuries from shoveling

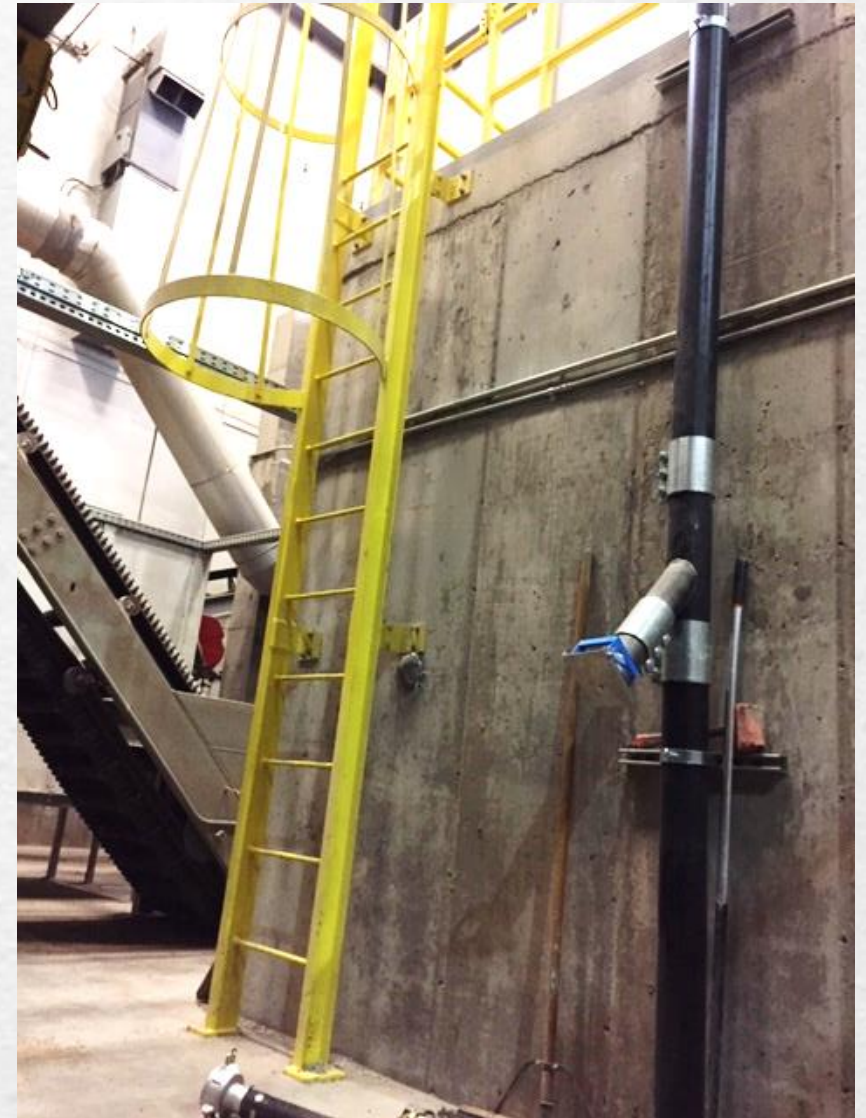


Productivity / Ergonomics / Material Handling



Piping drop and hose connection in receiving pit for aggregate and wet/dry sand (no shoveling).

Horizontal pipe (left) cleans spills from feeders and conveyors under batch plant silos, as well as silo roofs.



SINCE 1954

VAC-U-MAX
DELIVERING MORE

vac-u-max.com



VAC-U-MAX SNAP-CAM inlet valve with spring-loaded cover in form demolding department. Pipe network is sch. 40 steel.



SINCE 1954

VAC-U-MAX
DELIVERING MORE

vac-u-max.com



***30HP Central Vacuum System
2yd3 Collection Capacity
650 ACFM @ 14" Hg
HEPA Filtration
Outdoor location
Sch. 40 Piping indoors***



***Material Handling:
30HP System Vacuum
Loading a Vacuum-Tight
20yd3 Roll-off Box for
dust-free disposal***

SINCE 1954

VAC-U-MAX
DELIVERING MORE

vac-u-max.com



***30HP System
Vacuum Loading
a 20yd³ Roll-off Box***

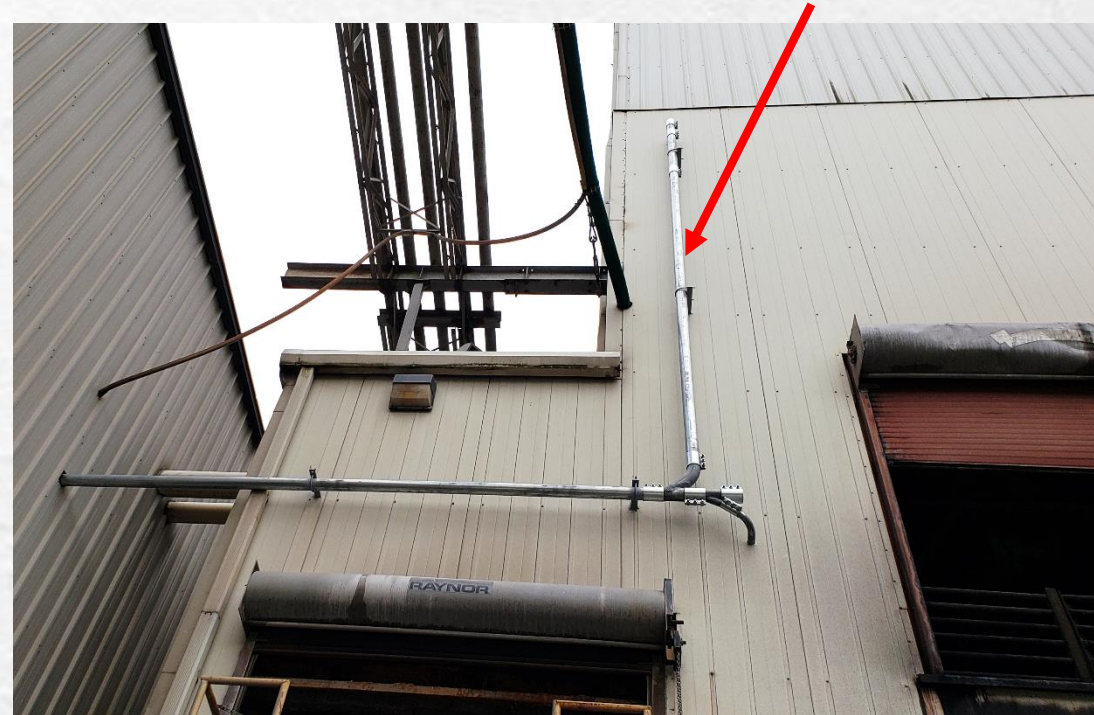
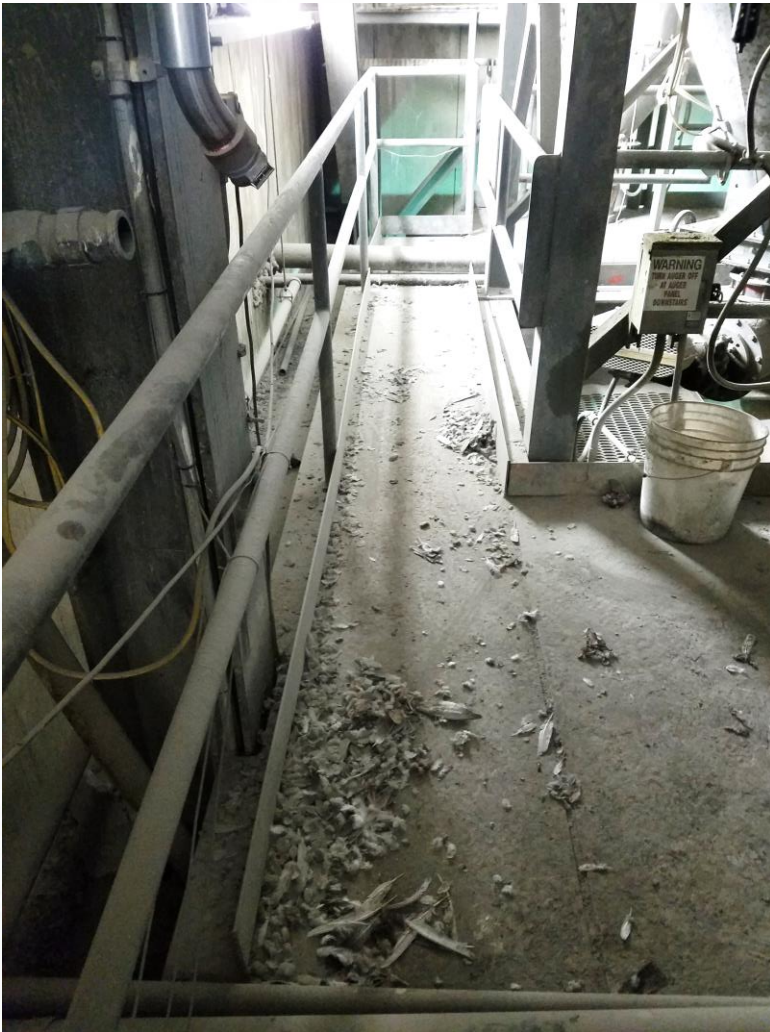
SINCE 1954

VAC-U-MAX
DELIVERING MORE

vac-u-max.com

Reduce Maintenance:

Transportable vacuum systems can reach multiple levels of the Batch Tower with a tubing run to clean walkways and fugitive dust and keep dust from migrating into control rooms



SINCE 1954

VAC-U-MAX
DELIVERING MORE

vac-u-max.com

***Productivity & Ergonomics:
Clean up Conveyor Belt
Spillage @ 10,000lb/hr***



***Flexibility:
Portable Vacuum System can
be moved between buildings***

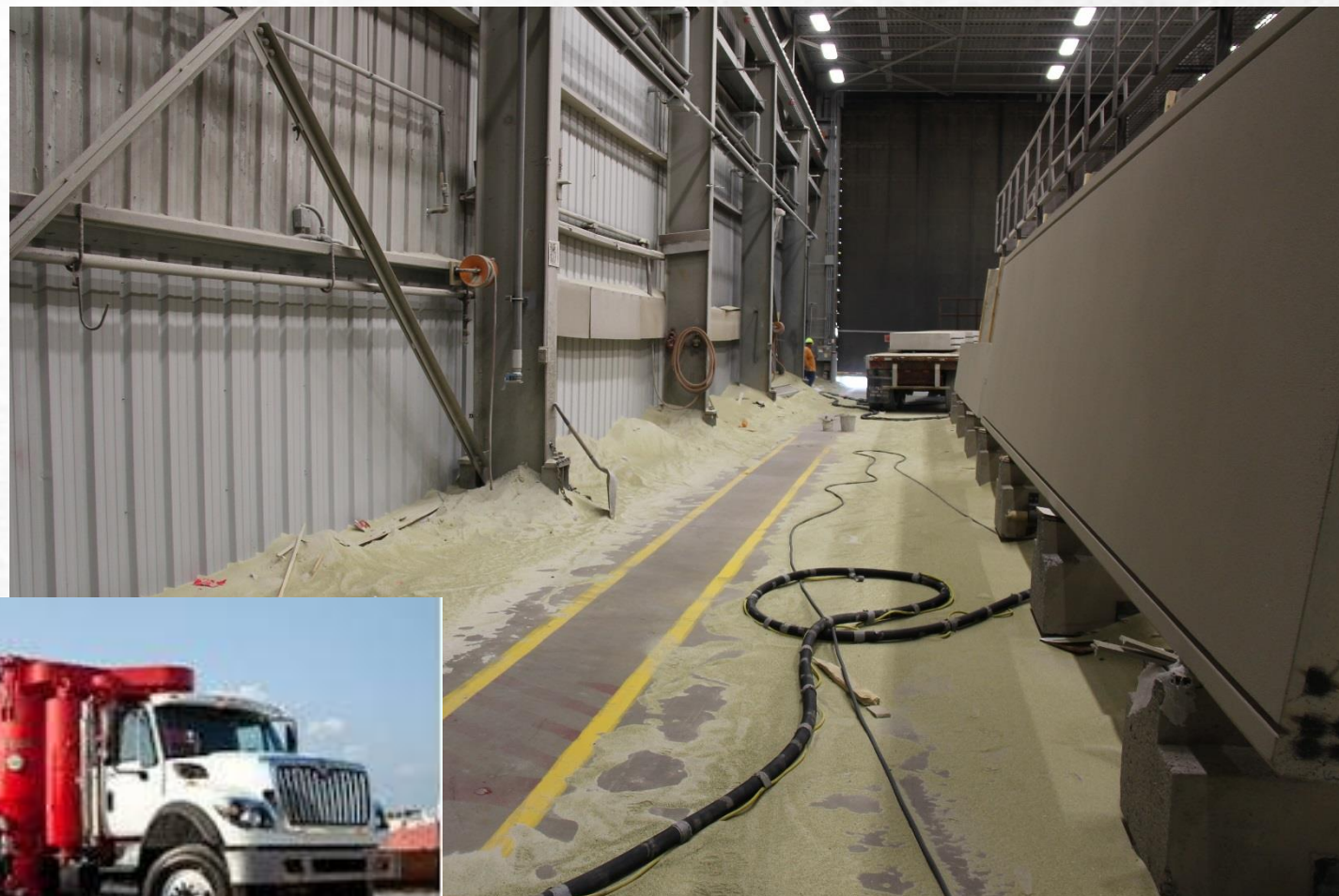
Better working conditions...increase worker retention



Wall Cleaning from ground level with 15ft extension wands improves *light reflectivity* and working conditions.



Profitability:
Eliminate vacuum trucks: *DIY!*





Safety:
*Eliminate compressed
air blowing for housekeeping
It's not just dust...*

Productivity:
*Blowing is a "false clean"...
Pushing dust somewhere else,
for someone else to clean it up*

*Vehicle traffic will make it
airborne and respirable*



Compressed air blowing: “Dust Relocation”



To:

Exhaust fans

Computer cooling fan inlets

Workers’ clothing

Outdoor roadways

Overhead lighting and heating fixtures

Workers’ clothing

Air Filters of:

Mixer Trucks, Forklifts, Straddle Carriers

Air Compressors, Hydraulic Power Units

Instrumentation & Sensors



Vacuuming Dry-Cast Concrete in Hollowcore Production



SINCE 1954

VAC-U-MAX
DELIVERING MORE

vac-u-max.com

***Dust and Quality Control:
Sanding resin beds***

***Apply the same sanding
pads to a concrete polisher
and provide source-capture
Vacuum***

***Cost Control:
Source-capture vacuum
systems extend abrasive
life and shorten the task***



SINCE 1954

VAC-U-MAX
DELIVERING MORE

vac-u-max.com

Source-Capture of Dust

Random Orbital Sanders

Right-Angle Grinders

Hammer Drills

Dry Coring

Concrete Polishing (dry)



Reduced abrasive usage

Faster Task Completion

Higher-Quality Finish

Less Clean-Up Time

Clean disposal of debris

SINCE 1954

VAC-U-MAX

DELIVERING MORE

vac-u-max.com



***No Shop-Vac Burnout!
Vacuums operate on
compressed air!***



SINCE 1954

VAC-U-MAX
DELIVERING MORE

vac-u-max.com



Industrial-Duty Filtration:
**Electric Drum-Top Vacuums with
High-Efficiency Filtration and
manual filter shaker.
Operates on **115V / ph power****



SINCE 1954

VAC-U-MAX
DELIVERING MORE

vac-u-max.com



VAC-U-MAX

DELIVERING MORE

vac-u-max.com